



**Meeting**            **Chew Valley Area Forum**

**Date**              **Thursday, 7th July, 2016**

**Time**              **6.00 - 8.00 pm**

**Venue**            **Chew Valley Secondary School - Chew Magna**

	<b>Subject</b>		
--	----------------	--	--

**6.00pm- 6.50pm - Informal Open public session**

<b>1.</b>	<b>Welcome, introductions and apologies by the Chair, Chris Head</b>		
<b>2.</b>	<b>Updates from the Police and other public sector partners (20 mins)</b>  Police Monthly crime stats for Forum area: <a href="https://www.police.uk/avon-and-somerset/CS219/crime/+sIRX6W/">https://www.police.uk/avon-and-somerset/CS219/crime/+sIRX6W/</a>		
<b>3.</b>	<b>Briefing on the West of England Devolution proposals (15 mins)</b>  <i>For more information on the West of England proposed devolution deal please read the Q&amp;As - <a href="http://www.bathnes.gov.uk/services/your-council-and-democracy/west-england-devolution/west-england-devolution-ga">http://www.bathnes.gov.uk/services/your-council-and-democracy/west-england-devolution/west-england-devolution-ga</a></i>		

**(10 mins tea and coffee break)**

**7.00pm - 8.15pm - Ordinary Meeting**

<b>4.</b>	<b>Notes of the previous meeting held on 28th April 2016 (attached)</b>		
<b>5.</b>	<b>Matters arising</b>		

6.	<p><b>The provision of early help services in the Chew Valley</b></p> <p>Richard Baldwin, Divisional Director, Children and Young People's Targeted and Specialist Divisions and Tracey Pike, Operations Manager, Bath &amp; North East Somerset Council</p> <p><i>The presentation will include information about Youth Connect activities in Chew Valley area, EETs/NEETS in Chew Valley, current/planned holiday/preventative initiatives, CAF's, Connecting Families and Children's Centre facilities.</i></p>		
7.	<p><b>B&amp;NES Clinical Commissioning Group - "Our vision for general practice: How can GP surgeries work in partnership to transform health care in your community?" (Pages 9 - 14)</b></p> <p><i>The CCG will be presenting their vision for general practice and seeking the views of those present at the meeting. This part of the meeting will take the form of a workshop. In addition, they will also be providing an update on the procurement process for the 'your care, your way' commission. Attached document: Statement of Intent BANES Primary Care 2020.</i></p>		
8.	<p><b>Forum Working party - to explore ideas for a 'Chew Valley Community Hub'</b></p>		
9.	<p><b>Any Other Business</b></p>		
10.	<p><b>Dates of next meeting:</b></p> <p>29<sup>th</sup> September 29<sup>th</sup> November</p> <p><b><i>Future Agenda items: See attached</i></b></p>		

Agenda Item 4

**Draft Notes of the Chew Valley Forum**  
28th April 2016 at 6pm  
The Library, Chew Valley Secondary School

**Present**

<b>Name</b>	<b>Organisation Represented</b>
Chris Head	Chair of Forum and Chief Executive, WERN
Cllr Tony Heaford	Vice Chair of Forum and Publow with Pensford Parish Council
Cllr Rosemary Naish	Clutton Parish Council
Cllr Weiss	Ubley Parish Council
Cllr Wesley Hallam	Chairman Ubley Parish Council
Jane Griffiths	Parish Clerk, Compton Martin Parish Council
Cllr Tim Warren	Leader of Bath & North East Somerset Council
Cllr Charlie Bishop	Publow with Pensford Parish Council
Cllr Liz Richardson	Cabinet Member for Homes and Planning and Chew Valley North Ward Councillor
Cllr Liz Brimmell	Hinton Blewett Parish Council
Cllr Richard Ireland	West Harptree Parish Council
Cllr Ashton Broad	Whitchurch Parish Council
Cllr John Swift	Stanton Drew PC & Neighbourhood Plan
Mike Curtis	Chew Valley Flood Forum
Paul Bryan	Mendip Hills AONB
Cllr Holger Loux	Dundry Parish Council
Cllr Martin Veal	Cabinet Member for Community Services
Cllr Nick Baker	Chew Stoke Parish Council
Cllr Nick Scholefield	Chew Magna Parish Council
PC Sarah Hewlett	Avon and Somerset Constabulary
PC Mike Bolwell	Avon and Somerset Constabulary
PC Nigel Penny	Avon and Somerset Constabulary
Anna Wheeler	Bath College Adult Community Learning

**B&NES Officers**

Ashley Ayre	Strategic Director for People and Communities and Forum Sponsor
Bruce Laurence	Director of Public Health
Julie O'Rourke	Planning Policy - Place
Jim Collings	Environmental Services - Place
Simon Morrissey	Environmental Services - Place
Jim McEwen	Environmental Services - Place
Sara Dixon	Strategy & Performance

**Apologies**

Cllr Chris Craig	Compton Martin Parish Council
Cllr Vic Pritchard	Cabinet Member for Adult Social Care and Health and Chew Valley South Ward Councillor
Cllr Lynne Easton	Chew Magna Parish Council
Chris Brookes	Local resident
Cllr Tony Hooper	Cameley Parish Council

**Informal Open Public Session**

		<b>Action</b>
<b>1.</b>	<b>Welcome and Introductions</b>	
1.1	Chris Head the Chair of the Forum welcomed everyone to the meeting.	
1.2	Chris read out a statement regarding the Police and Crime Commissioners	

	<p>Elections.</p> <p><i>In the lead up to the Police and Crime Commissioners (PCC) Elections there is a 6 week pre-election period (commonly known as “purdah”). During this time, pre-election restrictions apply and Councils are required to take particular care over publicity to ensure that communications are balanced and without bias. Therefore this Forum will not be able to take any questions or comments regarding the PCC.</i></p>	
<b>2.</b>	<b>Update on Local Policing</b>	
2.1	Chris Hand welcomed PC Mike Bolwell, PC Sarah Hewlett and PCSO Nigel Penny from Avon and Somerset Constabulary. He referred to the monthly crime stats for Forum area which can be viewed on the following link: <a href="https://www.police.uk/avon-and-somerset/CS219/crime/+sIRX6W/">https://www.police.uk/avon-and-somerset/CS219/crime/+sIRX6W/</a> .	
2.2	Chris Hand over to Mike Bolwell to update the group on police matters.	
2.3	Mike said he was standing in for PC Stuart Beard. He circulated a written update which highlighted local crime and policing issues.	
2.4	Jane Griffiths the Clerk from Compton Martin Parish Council asked whether there could be any measures in place to help the flow of traffic in the village on the day of their event. She added that it was an excellent event however the on-street parking had in the past caused some problems. Mike asked Jane to provide information about the event so that the Police could have some presence on the day.	MB
2.5	Liz Brimmell commented on the use of mobile phones and speed of tractor drivers in the village, which she felt was dangerous and disrespectful. Mike suggested that Parish Councils should report these issues either directly to the police or to Sara Dixon who would pass on the information.	ALL
2.6	Chris Head mentioned that there had been a number of cycle races that took place in the area during March and April which had no traffic management in place. One of the events was a cycle route of 10 laps cutting through many villages in the Chew Valley. The pre-warning and event signage had been poor. This is a growing problem in the area in addition to the regular cycling groups that use the Chew Valley. Chris said that he had raised this with Council officers and was awaiting feedback.	CH
2.7	Chris referred to the list of Highway Capital programme that was distributed to members at the meeting. He commended that it was useful to see the programme for the whole area.	
2.8	Chris reminded the group that there were a series of consultation events on the Transport Strategy being held, Chew Valley, 26th April and the Somer Valley, 5 <sup>th</sup> May. Deadline for comment was the 9 <sup>th</sup> May. He added that alongside this work was the Total Transport bid to find local solutions to transport issues in the Chew Valley. An update on the Transport issues would be brought back to a future meeting.	
2.9	Tony Heaford mentioned the planned closure of the A37 in Pensford for 2 weeks for road improvements. He was concerned about the impact of closure on traffic travelling through Pensford and the other villages. He sought clarification on the details of the closure particularly the timing and requested that the villages surrounding Pensford should also be notified. Sara agreed to follow this up.	SD
<b>3.</b>	<b>Neighbourhood Plans in the Chew Valley</b>	
3.1	Chris introduced the next agenda item – ‘Update on Neighbourhood Plans in	

	the Chew Valley'. He said that within the Forum area there were 14 Parishes, 11 of which were going through or had gone through the Neighbourhood plan process. He was delighted to invite five groups along to the meeting to update on their progress.	
3.2	<b>Chew Valley Neighbourhood Plan</b> – Liz Richardson provided an update on the plan. The plan includes 7 Parishes that surround the Chew Valley Lake. The NP is pro-development, it is not designed to stop growth. The plan will help preserve the things that are most important to the area. There is a steering group overseeing the process with four sub committees. The CVNP will be launched at the weekend, the final version will be available on the website and a number of events will take place.	
3.3	For more information: Chew Valley Neighbourhood Plan <a href="http://www.cvnnp.co.uk/">http://www.cvnnp.co.uk/</a>	
3.4	<b>Clutton Neighbourhood Plan</b> – Rosemary Naish provided an update. The process began in August 2013. Clutton NP passed a referendum in September 2015, 95.8% in favour of the plan. It has made a significant improvement to the area as it is increased the interest in local democracy, volunteering and interest in local planning applications. Local residents are now quoting the policies from the plan.	
3.5	To view Clutton NP which was made in September 2015 : <a href="http://www.bathnes.gov.uk/sites/default/files/sitedocuments/Planning-and-Building-Control/Planning-Policy/NPP/clutton_np_draft_2015-2035.pdf">http://www.bathnes.gov.uk/sites/default/files/sitedocuments/Planning-and-Building-Control/Planning-Policy/NPP/clutton_np_draft_2015-2035.pdf</a>	
3.6	<b>Stowey Sutton Neighbourhood Plan</b> – Unfortunately no one was able to attend the meeting however Heather Clewett from the Parish Council provided a written update which was circulated to the group (attached as an appendix to the notes).	
3.7	To view Stowey Sutton NP which was made in September 2015: <a href="http://www.bathnes.gov.uk/sites/default/files/sitedocuments/Planning-and-Building-Control/Planning-Policy/NPP/stowey_sutton_ndp.pdf">http://www.bathnes.gov.uk/sites/default/files/sitedocuments/Planning-and-Building-Control/Planning-Policy/NPP/stowey_sutton_ndp.pdf</a>	
3.8	<b>Publow and Pensford Neighbourhood Plan</b> – Charlie Bishop provided an update. The NP is currently underway. There are 14 active members on the steering group with 4 sub groups. The biggest issues for the village is the traffic along A37. A draft version of the NP is being produced for consultation in May and referendum in Nov/Dec.	
3.9	For more information: Publow and Pensford Neighbourhood Plan <a href="http://www.publow-with-pensford-pc.gov.uk/pc/background/">http://www.publow-with-pensford-pc.gov.uk/pc/background/</a>	
3.10	<b>Stanton Drew Neighbourhood Plan</b> – John Swift provided an update. The NP was designated in October 2013. Currently the steering group are producing their questionnaire and gathering evidence. A housing needs survey is currently being prepared. It is hoped that the plan will be completed early 2017.	
3.11	For more information: Stanton Drew Neighbourhood Plan <a href="http://www.stantondrewpnp.co.uk/category/neighbourhood_plan/">http://www.stantondrewpnp.co.uk/category/neighbourhood_plan/</a>	
3.12	Julie O'Rourke from the B&NES Planning Policy team congratulated all the NP groups for their hard work. She recognised the amount of work that was required to produce a plan and added that the plans in B&NES are really good, distinctive and different. She said that she was delighted that Rosemary Naish was now a National champion on NP and was visiting other areas to share experience and knowledge. This was very important.	
3.13	All the representatives from the NP groups commented that Julie had been a great supporter and had provided invaluable advice and guidance.	

3.14	Bruce Lawrence, from B&NES Public Health commented that he had not heard any of the groups mention health. Julie said that this was highlighted under sustainability. Health & wellbeing was built into some of the elements around play facilities, traffic, good quality housing, etc.	
4.	<b>Briefing note on the West of England Joint Spatial Plan</b>	
4.1	Chris referred to the briefing note circulated to the group at the meeting.	
5 & 6	<b>Notes of the Previous Meetings 22<sup>nd</sup> February and matters arising</b>	
5.1	The notes of the meeting were agreed. There were no matters arising.	
7.	<b>'Working with Water'</b>	
7.1	Chris welcomed the key speakers to the meeting and round table introductions were made.	
7.2	Chris Sherrington gave a presentation on the <b>Winford Brook Payment for Ecosystem Services</b> . See link for copy of presentation: <a href="http://www.bathnes.gov.uk/sites/default/files/winford_brooks_project.pdf">http://www.bathnes.gov.uk/sites/default/files/winford_brooks_project.pdf</a>	
7.3	The project was centred around the Winford Brook catchment area. The issues: Bristol Water who owns the Chew Magna Reservoir was required to occasionally remove silt to avoid erosion. The silt has been stored on site, however there are a number of constraints that will require the silt to be removed off the site in the future. Bristol Water was keen to explore cost-effective measures to reduce the amount of silt entering the reservoir. In addition they were keen to reduce the nutrient levels in Chew Valley Lake and Wessex Water was also keen to reduce the nutrients from their local wastewater treatment works.	
7.4	Bristol Water commissioned a detailed survey identifying specific issues and proposing measures to address them. The survey identified a greater level of sediment in the reservoir than the models showed, the reason - road surfaces were very efficient. It was also important that local landowners were engaged to explore land and livestock management.	
7.5	For more information about the project visit: <a href="http://www.eunomia.co.uk/reports-tools/payments-for-ecosystem-services/">http://www.eunomia.co.uk/reports-tools/payments-for-ecosystem-services/</a>	
7.7	David Cliffe, from Bristol Water gave a presentation on the <b>Mendip Lakes Project</b> . See link for copy of presentation: <a href="http://www.bathnes.gov.uk/sites/default/files/bristol_water_mendip_project.pdf">http://www.bathnes.gov.uk/sites/default/files/bristol_water_mendip_project.pdf</a>	
7.8	The Mendip Lakes Project started in 2014 aimed at improving the quality of the natural environment across the catchment areas of the Chew Valley, Blagdon and Chew Magna reservoirs. The main issues of concern were the water quality, flood risk management and habitat provision/enhancement.	
7.9	The project brings together key agencies including Wessex Water, Environment Agency and landowners. Working with landowners has been keen to identify local solutions for land management to improve; soil permeability; attenuation measures of flow pathways; clean and dirty water separation and; strategic woodland planting.	
7.10	For more information about the project visit: <a href="https://www.wessexwater.co.uk/Bristol-Avon-projects/">https://www.wessexwater.co.uk/Bristol-Avon-projects/</a>	
7.11	Chris Uttley from Stroud District Council gave a presentation on the <b>Stroud Rural SuDs project</b> . See link for copy of presentation:	

	<a href="http://www.bathnes.gov.uk/sites/default/files/stroud_rural_suds.pdf">http://www.bathnes.gov.uk/sites/default/files/stroud_rural_suds.pdf</a>	
7.12	The Stroud Rural SuDs project was set up in 2007 as a result of properties flooding in the area every two to three years. The catchment covered an area of 205 sqms of the River Frome and all its tributaries.	
7.13	Community buy-in was essential. Working with landowners and residents to identify and implement a range of measures to reduce flood risk but also to improve water quality and enhance the biodiversity of the streams, brooks and the wider River Frome catchment.	
7.14	The interventions included: large woody debris in channels to alleviate water, slow peak flow and divert flow; inform and formal storage and attenuation and increasing infiltration.	
7.15	For more information about the project visit: <a href="http://www.stroud.gov.uk/environment/flooding-and-drainage/stroud-rural-sustainable-drainage-rsuds-project">http://www.stroud.gov.uk/environment/flooding-and-drainage/stroud-rural-sustainable-drainage-rsuds-project</a>	
7.16	Chris thanked all the speakers for a very interesting and informative session.	
7.17	Jim Collings from the B&NES Flooding team thanked Chris for inviting the team to the meeting. He said was keen to continue the discussion and look at local solutions. Liz Richardson commented that it was important to bring this to the attention of the Strategic Flood Board to ensure the right people were around the round table.	JC/LR
7.18	For information B&NES Local Flood Risk Management Strategy 2015 – 2025. <a href="http://www.bathnes.gov.uk/sites/default/files/lfrms_december_2015_web_sp.pdf">http://www.bathnes.gov.uk/sites/default/files/lfrms_december_2015_web_sp.pdf</a>	
<b>8.</b>	<b>Any other Business</b>	
8.1	There was none.	
<b>9.</b>	<b>Date of next meeting</b>	
9.1	The next meeting will take place on Thursday 7 <sup>th</sup> July at 6pm. The focus will be on Children & Young People. The September meeting will include transport.	
9.2	Chris thanked everyone for their attendance and input into the meeting.	

**Chew Valley Forum – 28<sup>th</sup> April 2016**  
**Stowey Sutton Parish Council - update**

Neighbourhood Development Plan

Stowey Sutton Parish residents completed a high level questionnaire identifying themes of importance to the community in 2012. Following the change in regulations in Oct 13 which allowed Neighbourhood Plans to be 'made' in the absence of a Core Strategy, the Parish Council held a community event and quickly established a steering group to progress NP with the working groups based on the earlier themes. The Steering group comprised residents and 3 Parish Cllrs including the Chairman who chaired the Steering Group. Stowey Sutton includes Bishop Sutton which is identified as RA1 village by the Council and as such should receive 'around 50 houses'. At the time of starting the NP a development of 38 houses had already been approved and a further development of 38 were in the process of a successful appeal, all of which were outside the Housing Development Boundary and placing pressure on the infrastructure of the community.

With the exception of the housing questionnaire, which was facilitated through an external organisation, all of the work of the NP was completed by the Steering Group with support from the link council officer. Community engagement was a key feature of the process as well as open events, representatives of the Steering Group attended existing groups including those for young people and school parents and children. The NP contains 5 housing policies plus a number of action policies which were identified as important by parishioners through the initial consultation process. These fall within the categories of Business and Employment, Transport and Communications and Community and Recreation. The NP was considered by the external examiner in March 2015, minor amendments were made and the NP went to referendum in August in August 2015 with a 36% (404 parishioners) turn out and 95% in favour. The NP was 'made' by the Council in September 2015.

Village Play Project/Recreation Ground

Parents of young children identified significant shortfalls in the play area located on the Recreation Ground in Bishop Sutton to the extent that it was rarely used and families chose to drive to adjacent village play facilities. The recreation ground is located to the rear of the village hall which has sporadically become a focus for young people's anti-social behaviour..

Meetings took place with officers from the council, funding through S106 identified and a tender process completed by the PC. This appointed the external organisation Jane's Pond, to complete more detailed gathering of views alongside suggestions as to which facilities and possible design options might meet current and future play and community activity options.

Following a well presented and attended and consultation in January 2016, four design proposals will have been further considered by residents at a second consultation event today. The outcome of this will be discussed and presented at Stowey Sutton Parish Council meeting in June. The whole project has encouraged 'blue sky' thinking with many very exciting opportunities for an underused recreation ground. Development will need to be phased and initially concentrating on play provision. It is anticipated that additional funding will be needed as the preferred design proposal progresses.



Draft

## **Statement of Intent**

### **BaNES Primary Care 2020**

**May 2016**

# Draft Statement of Intent

## BaNES Primary Care 2020

May 2016

**The purpose of this statement is to set out the ambition and vision for primary medical services in Bath and North East Somerset by 2020.**

### 1 Introduction

This statement is based on themes arising from engagement that has taken place during the course of 2015/16 with the public, GP practices and other local stakeholders. It will form the basis of the nascent Primary Care Strategy for General Practice. The statement builds on our approach to the development of primary care outlined in the CCG's 5-year strategy 2014-19.

For clarity, this statement of intent is focussed on General Practice. Whilst the CCG does not hold the core primary care contractual responsibilities for Dentistry, Eye Care and Pharmacy it is recognised that these areas will be incorporated in the future.

### 2. The Local Context

BaNES GPs serve a generally healthy and relatively wealthy population, however, there are pockets of significant deprivation and associated health inequalities. We have a mixture of urban and rural populations.

- Our GP practices collectively perform extremely highly, as reported in the GP Patient Survey (GPPS) with overall patient experience reported as 'good' at 92% for BaNES (in the top few in country), compared to 85% nationally.
- We have the best outcomes for overall patient care in the country.
- The initial reports arising from CQC inspections are positive with all inspected practices (10 to date) receiving overall judgements of 'Good'.

*We recognise that one size does not fit all in terms of the different communities and needs across BaNES, so there will need to be variation in the way services are set up.*

### Collaboration

We have a good history of collaboration amongst our own practices, well-established integration with the local authority and a history of close working with the wider health community.

### Why is change needed?

- A. We know from our GP community that we must:
- Ease pressure on GP practice workload to deliver sustainability. The status quo is not an option
  - Influence and collaborate with the wider health and care community, and innovate across an increased range of services

B. We know from our public engagement:

- There are variations across practices regarding GP access / appointments
- Support is required to navigate the system – for those inside and out of it
- There can be specific challenges with the management of patients with mental health problems, at End of life and out of hours
- We can improve our use of IT, and the appropriate sharing of patient records

C. General Practice Forward View (GPFV)

The GPFV has outlined the expected direction of travel for CCGs and their member practices. The GPFV acknowledges the pressures on primary care that have been highlighted in recent years:

- Ageing populations, growing co-morbidities and increasing patient expectations
- Increasing pressure on NHS financial and staffing resources
- Persistent inequalities in access, quality and outcomes of primary care at a national level
- A growing workforce issue affecting the wider primary care workforce – GPs, nurses, HCAs
- Burden of bureaucracy and unpaid work that has grown inexorably

Both local and national factors are important in shaping the direction and content of our primary care strategy.

**The last year...**

In the last year there has been some progress. For example,

- We commenced Joint Commissioning with NHS England for General practice
- We completed the PMS review process and agreed proposals for future service reinvestment.
- We continued with the BEMS+ PCPF project which will conclude this year
- We worked with practices to support a bid for national primary care transformation fund
- We have run a local CCG transformation bid process to test new ideas.

There is much to build on.

**3. The CCG's role in Developing Primary Care**

The role of the CCG is

*To lead our health and care system collaboratively through  
the commissioning of high quality, affordable, person centred care*

'Your Care, Your Way' sets out an ambition that everyone should access the best possible health and care services in their community.

General practice plays a pivotal role in delivering this ambition. However, service and delivery models need to change to respond to the current and future needs of our local population.

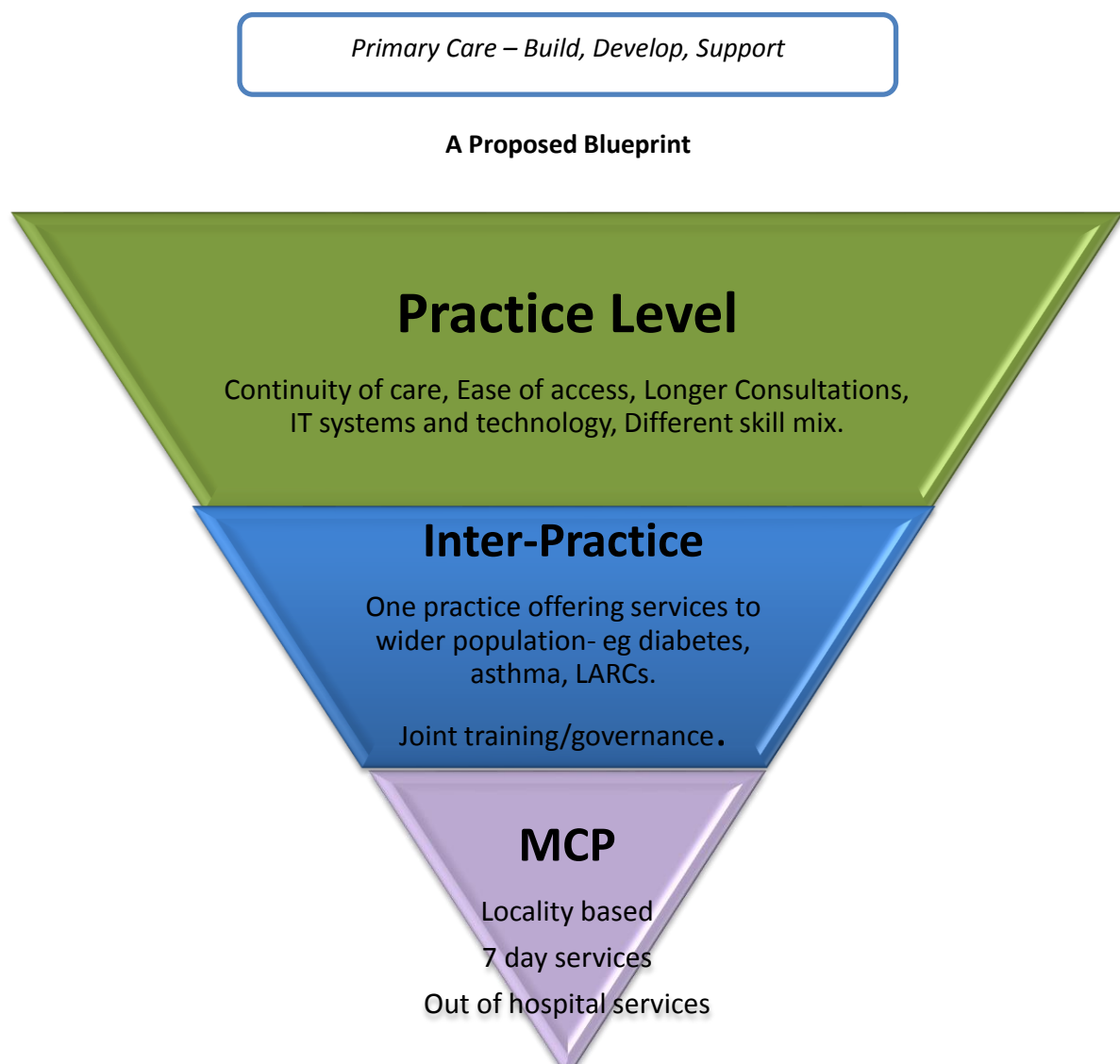
In BaNES we will build a seamless integrated service for patients that is linked to local assets in the community and maximises the benefits of non-medical interventions like social prescribing and other services provided by the voluntary sector.

This will be demonstrated by the way services are delivered and outcomes that are aligned and are common across services.

It is our belief that this will

- **Build** on the solid foundation of high performing primary care in Bath and North East Somerset
- **Develop** a service that is equipped for the future
- **Support** the sustainability and resilience of our practices

#### 4. BaNES Primary Care 2020 Vision



**MCP** = Multi-Specialty Community Provider, ie what was previously described as an Intermediate Care Centre (ITCC)

BaNES Primary Care 2020 can be summarised as:

- *Progressing Delivery at Scale*: changes to the contractual model and scale of delivery
- *Building Multi-Disciplinary Team approaches*: changes to skill mix and composition of teams
- *Enhancing Services delivered across 7 days*: changes to service design, location, timing and method of delivery
- *Maximising the role of technology*: to support delivery of wider range of methods for patient interaction with primary care
- *Enhancing the primary care workforce*: developing new roles to support primary care
- *Securing high quality primary care services*: through quality monitoring, peer review

This means that by 2020 we will see -

**1. Out of Hospital Services**

The development of a number of locations to deliver an enhanced range of services, accommodating future population growth and delivery of out-of-hospital services as a 'Multi-Speciality Community Provider' (MCP)

**2. Larger Practice Populations**

Practices (groups or merged practices) that serve larger populations, and that sites will be rationalised depending on need and location, but will remain the first point of contact for NHS services

**3. Evenings/Weekends**

Enhanced offer of routine primary care appointments at weekends and evenings at key designated locations subject to a local assessment of need

**4. Practice Collaboration**

Investment in support for continued practice collaboration, resulting in innovative changes to skill mix and unified approaches to clinical systems/record sharing

**5. Other Staff Groups**

- i) Work to increase the profile and stronger voice for all staff groups within primary care to make best use of their skills
- ii) Support for practices to test new workforce roles in primary care, accessing new national sources of funding where appropriate

**6. Technology**

- i) Technological solutions to support innovative approaches to meeting patients' needs (such as e-consultations and remote monitoring) and to encourage more self care
- ii) More patients accessing their electronic care record
- iii) Full inter-operability between GP practices in B&NES

## **What are we going to do in 2016-17?**

During 2016/17 we will consider and respond to actions arising from:

- Local appointment of the Prime Provider for the 'Your Care Your Way' Community Services provision
- BEMS+ PCPF final project recommendations
- Outcomes from Estates and Technology bids submitted to the NHS England Transformation Fund in June 2016

We will also: -

- Develop a plan to transition to 'Delegated' Primary Care Commissioning from 2017/18.
- Assess the appetite for a local version of the Dudley type Outcomes Framework to replace QOF and incorporate Enhanced Services
- Test our proposed vision for primary care with members of the public and local stakeholders.
- Continue to work with GP Practices to see how they can support the system to increase its responsiveness and management of patients with urgent care needs

May 2016

## Join the Forum

Thursday 7th July at 6pm,  
Chew Valley Secondary  
School Library  
in Chew Magna

# Chew Valley Forum

**Tell us about the issues that  
matter most to you.**

Chew Valley Forum aims to  
improve the way the Council  
and its partners communicate and  
brings together neighbourhoods,  
villages and towns to reflect local  
issues and priorities.

### Main Topics for discussion:

- Update on the West of England Devolution proposals
- Our Vision for General Practice – how can GP surgeries work in partnership to transform health care in your community
- The provision of early help services in the Chew Valley

**If you're unable to attend and would  
like to ask a questions contact:**  
[mark\\_hayward@bathnes.gov.uk](mailto:mark_hayward@bathnes.gov.uk)  
or telephone 01225 396975.

### Parishes include:

Cameley, Chew Magna, Chew Stoke, Clutton ,Compton Martin, East Harptree,  
Hinton Blewett, Nempnett Trubwell ,Norton Malreward,  
Publow with Pensford, Stanton Drew, Stowey Sutton Ubley and West Harptree

This page is intentionally left blank





# Your Bath City Conference 2016

## Building the Future of Bath

***This is a Free Event for the public***

Doors open at 12 noon on Friday 1st July 2016  
The Guildhall, Bath

Our timetable of presentations and discussions for the day are below:

**12.15-13.00 The Council Chamber:**

An update will be provided by The Recreation Ground Trust

**From 12.00 The Kaposvar Room:**

Sustainability Research from The Bath Universities Green Group

**12.15-13.45 The Brunswick Room:**

Feedback on the recent Bath Access and Mobility Consultation

**13.00-14.30 The Council Chamber:**

Our vision for general practice: How can GP surgeries work in partnership to transform health care in your community?

**14.00-15.15 The Brunswick Room**

The Alzheimer's Society discusses 'Living with Dementia in Bath'

**15.00-16.30 The Council Chamber**

Community and Council supported activities that play a part in creating a more environmentally sustainable district

**18.00-19.30 The Council Chamber**

Questions from the people of Bath to 'Ask The Panel'

Hosted by Somer Valley FM's Dom Chambers  
and webcast on the B&NES Council website



**Councillor Tim Warren**  
Leader of Bath & North East  
Somerset Council



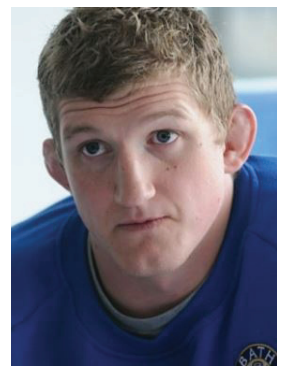
**Sue Mountstevens**  
Avon & Somerset Police &  
Crime Commissioner



**Ben Howlett**  
Member of Parliament  
for Bath



**Caroline Kay**  
Chief Executive  
Bath Preservation Trust



**Stuart Hooper**  
Captain of Bath Rugby  
(2011 - 2016)

# The Guildhall's Banqueting Room will be hosting organisations from the City who will on hand to talk with you between 12-5pm

Curo will be present to discuss Care and support services & The Mulberry Park Development

Hanover Housing is one of England's largest providers of housing for people in later life

Regeneration Projects in Bath Quays (North and South) and Bath Quays Bridge

Bathscape Revitalising our Landscape for People, Communities and Heritage

The City of Bath World Heritage Site

The Cleveland Pools - the country's only surviving Georgian lido

Find out more information on the Archway Project in Bath

Information on the B&NES Water Space Project

Bath Preservation Trust is a charitable organisation with a remit for the protection and enhancement of Bath's built heritage.

Bath Tourism Plus - how they support the City

Find out more about these Bath organisations:

London Road Partnership ♦ Medical Museum

The Jewish Cemetery ♦ Friends of Kensington Meadows

Julian House are a provider of accommodation and support services for socially excluded people

Our vision for general practice: How can GP surgeries work in partnership to transform health care in your community?

Bath Access and Mobility Consultation

Sirona will be on hand to explain 'Assistive Technology' that is available to help support our service users to remain independent

Alzheimer's Society, can offer advice on coping with Dementia in Bath

Bath Mind works to improve the lives of people suffering from mental health problems

Carers' Centre (Bath & North East Somerset) provide support for over 4,000 unpaid carers

Bath Swim Therapy are a community organisation and provide therapeutic swimming sessions for disabled & special needs children & their parents

The B&NES Family Information Service provides childcare and parenting information

Make a Move is a charity founded on the principles of music and movement

The B&NES Waste and recycling campaigns team within the Council, providing advice and information on recycling, reducing waste and encouraging re-use.

B&NES Public Protection - Food Safety, Environmental Protection and more

Bristol to Bath Festival of Nature Engaging people with the natural world

Small Business Focus represent member's interests to relevant government and quasi government organisations

Bath College is a people oriented organisation fundamentally concerned with skills, education and training.

The Bath Hacked group uses open data and technology to make useful things for people visiting, living, and working in Bath